


SUPPLIER MANAGEMENT AS A SERVICE



PRODUCT GUIDE

CTRL  **Tool**

WWW.CTRL-TOOL.COM

Welcome to CTRL-Tool

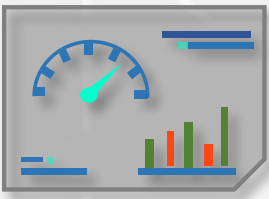
CTRL-Tool is ***specifically designed*** for Project & Portfolio Managers, Team leaders & Scrum masters, Directors and project Team members, however it can be used by anybody who wants to manage supplier in an ***easy, efficient*** and ***systematic way***.



Do you want to ***learn more*** about CTRL-Tool and its ***advantages*** for your business? ***Contact us*** and schedule a demo today at info@ctrl-tool.com

About CTRL-Tool

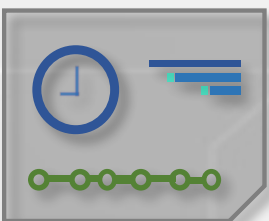
„CTRL-Tool is a software solution, designed to effectively steer and manage the creation process of your production tools and fixtures“



It is a **tracking** and **communication** software to ensure organizations have the right baseline to update and **report** on critical timings.



CTRL-Tool enables leaders and their organizations to **deliver** executional certainty and attain, and sustain, long-term competitive **performance**.



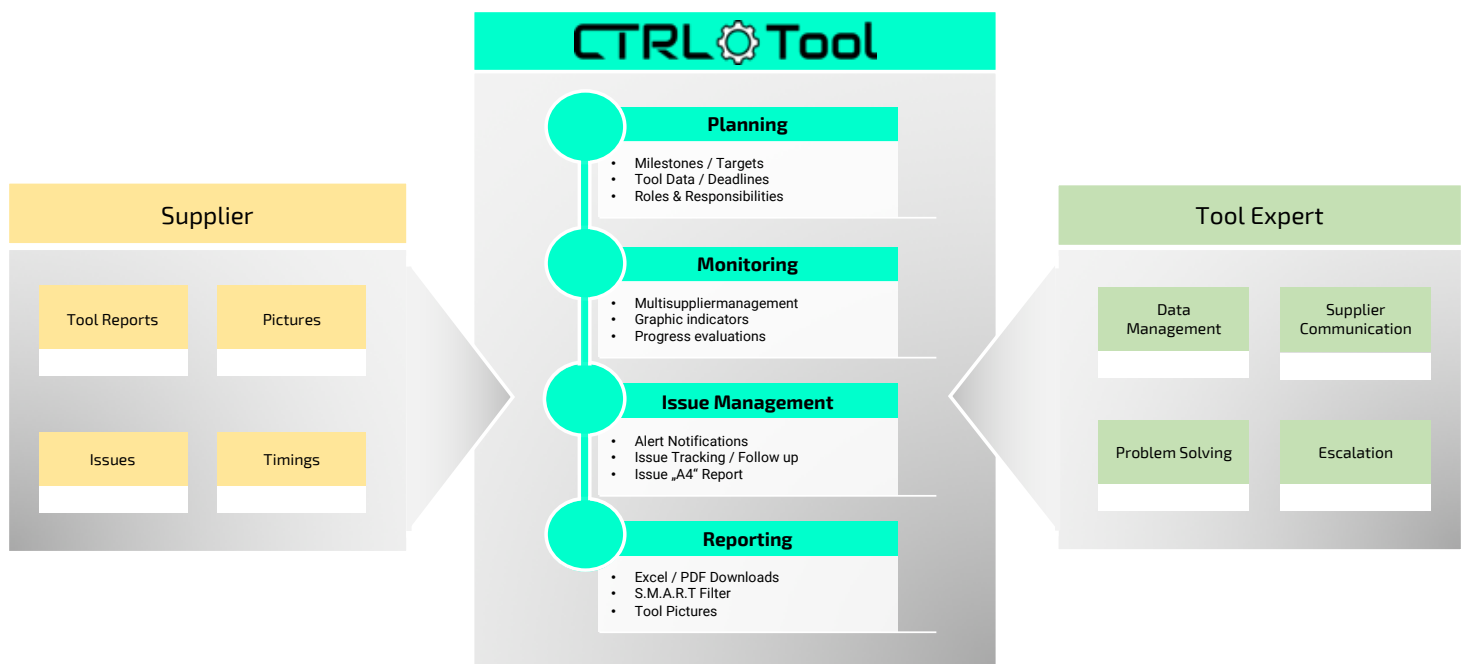
It also provides a **standardized platform** to raise issues to the senior management and stakeholder.

Increase productivity and use resources effectively

By **digitizing** your purchase part and supplier management with CTRL-Tool you get exactly the **flexibility** you need to react to constantly **changing market** and **competitive situations**.

With CTRL-Tool you get **the service you need**. You continue to use your existing systems and processes and expand your scope of action with the **flexibly adaptable** services of CTRL-Tool.

In this way, you receive constant added **value at a fair price**.



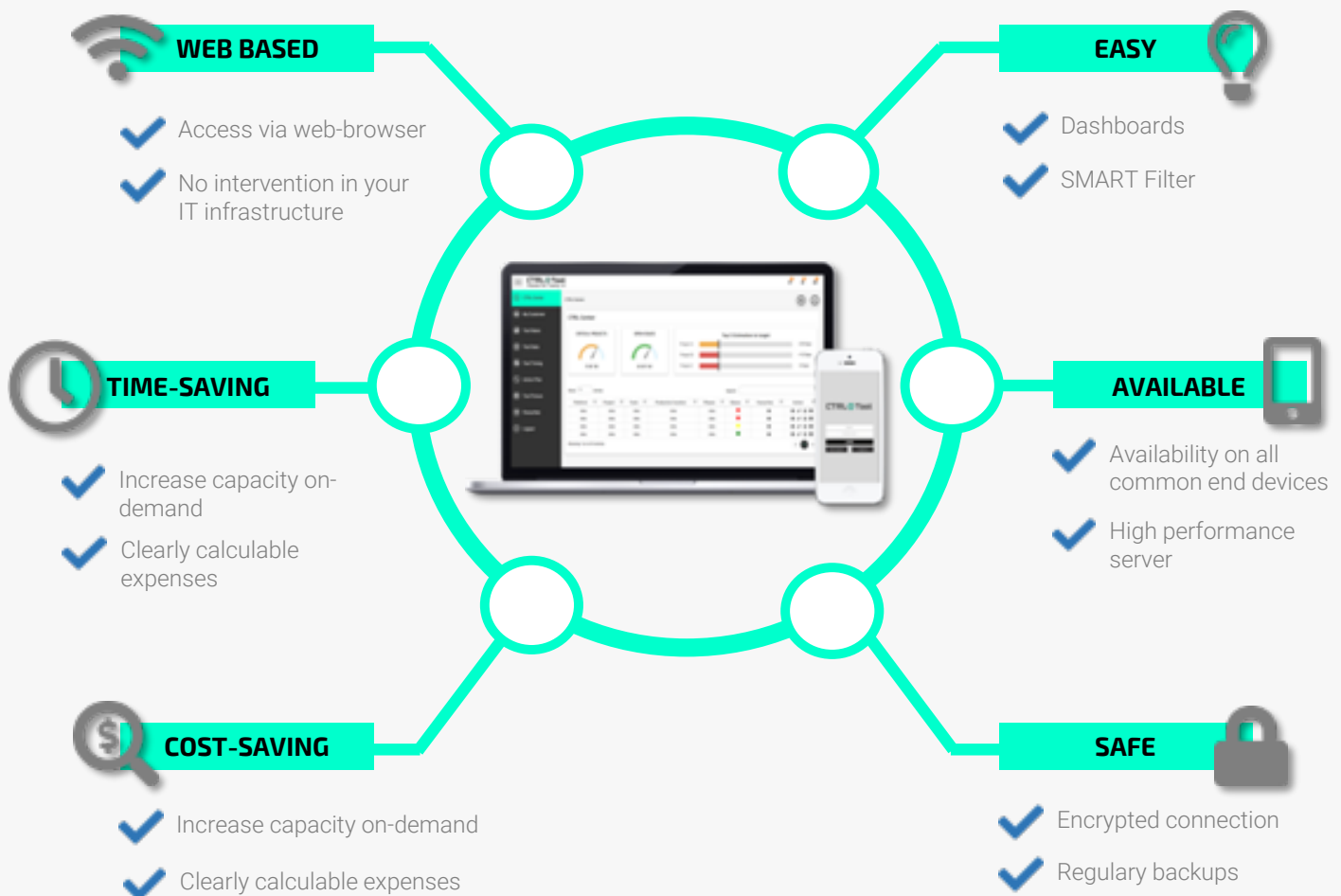
Ready to start?

Contact us a schedule a demo at info@ctrl-tool.com

Why CTRL-Tool?

A **flexible, lean** solution to the problem of purchased parts management and **fast** and **secure** data availability are the advantages that prepare our customers for a **dynamic and digitized future**.

Premium features that allow your team to **grow beyond itself**, wherever it is.

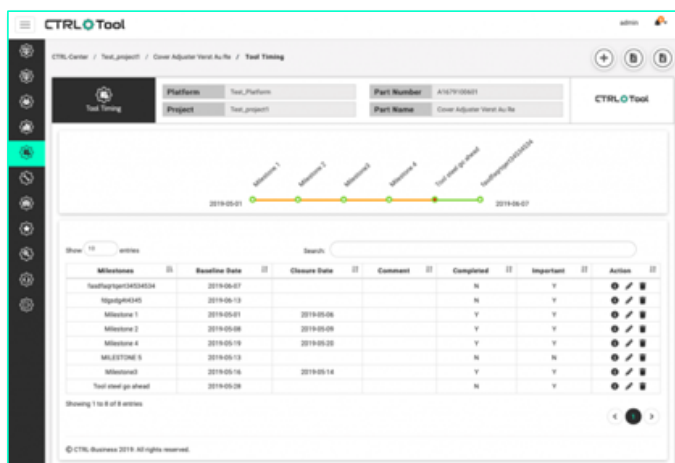


Efficient functions and intuitive design

Project Dashboard

The Project Dashboard displays all **important information** at the project level. The visibility you need to make **decisions based on facts**.

- ✓ Multi-Supplier-Management
- ✓ Progress evaluations



Tool Timing

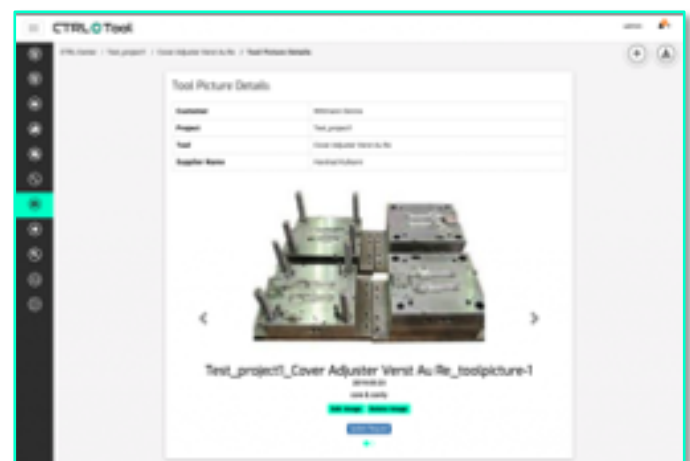
The interactive time axis provides a good **overview**, in which you can display the **deviations** of the milestones with a mouse movement.

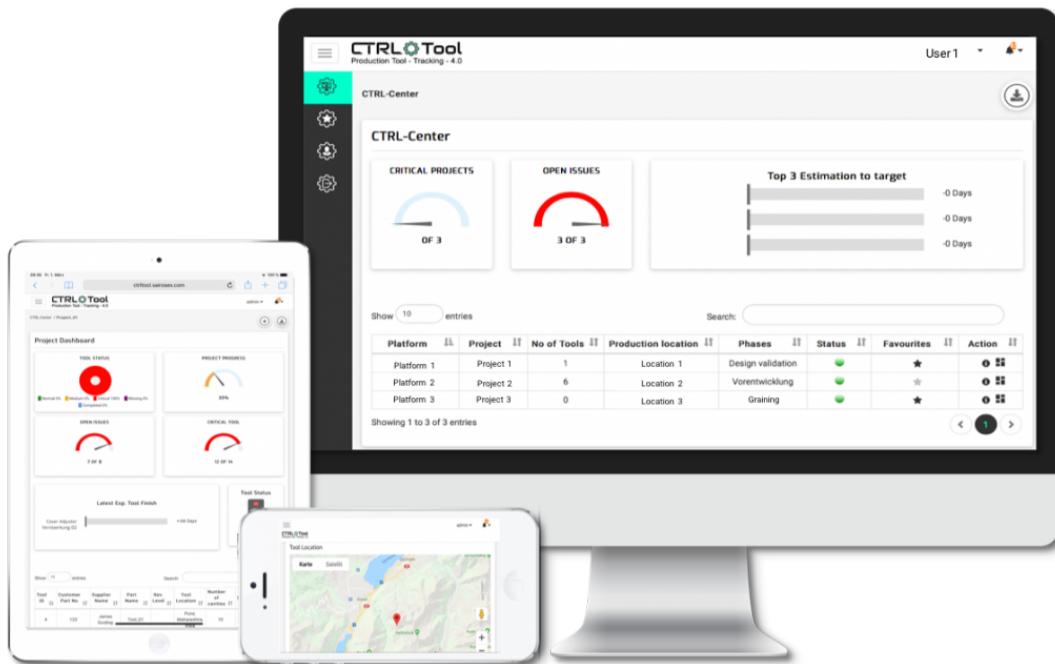
- ✓ Well-arranged
- ✓ Interactive

Tool Pictures

Keep an eye on **problems** and solve them quickly. Evaluations of **target/actual** comparisons and the corresponding forecasts are displayed in the tool News at tool level.

- ✓ Carousel viewer
- ✓ Picture details





WWW.CTRL-TOOL.COM



Copyright Information

This user guide file contains proprietary information that is protected by copyright. All rights are reserved. No part of this file may be reproduced in any form whatsoever or translated into any language without the prior written permission of CTRL-Business.

Photos are subject to copyright and come from the following sources:

Cover: "Young coworkers working on laptop computer at office.Woman holding tablet hand and pointing on touch screen. Horizontal, blurred background."©SFIO CRACHO@fotolia.com

Page 2: "Portrait of smiling blonde that pointed at mistake"©ViacheslavLakobchuk@fotolia.com

Page 8: " Music background. Big Data Particle Flow Visualization. Science infographic futuristic illustration. Sound wave. Sound visualization"©DamienGeso@fotolia.com

Copyright © 2019 CTRL-Business.

CTRL Tool

SUPPLIER MANAGEMENT AS A SERVICE

A Product by CTRL  Business

Staufenberger Strasse 3/5
73760 Ostfildern
Germany

info@ctrl-tool.com